

DHI-VDC0405EH-M80

VIDEO MATRIX PLATFORM DECODING CARD



Scene

Suitable for command centers, monitoring centers, operation centers, digital exhibition halls and more scenes.

Technical Specification

Board

Applicability	The video decoding card DHI-VDC0405EH-M80 is specifically designed for the M80-S24 series.
---------------	--

Port

HDMI	4 HDMI ports for video output.
------	--------------------------------

Function

Video Decoding Resolution	Decodes videos in 32 MP, 16 MP, 12 MP, 8 MP, 5 MP, 3 MP, 1080p, UXGA, 720p, D1, HD1, 2CIF, CIF and QCIF. Only H.265 can be used to decode videos in 32 MP, 16 MP and 12 MP.
---------------------------	---

Video Output Resolution	The maximum output resolution is 4-ch 4096 × 2160@60 Hz. You can customize the output resolution.
-------------------------	---

Video Format	Supports decoding videos in H.265, H.264, MJPEG, MJPEG4, SVAC and MPEG2 formats.
--------------	--

Decoding Capability	Supports performing real-time decoding of network videos based on the following capabilities: 2-ch 32MP@25 fps 4-ch 8MP@60 fps 8-ch 8MP@30 fps 36-ch 1080p@30 fps. Only H.265 can be used to decode videos in 32 MP.
---------------------	---

Multi-screen Display	Splits to 1, 4, 6, 8, 9, 16, 25, and 36 windows, and supports M × N custom split.
----------------------	---

General

Operating Temperature	-10 °C to +50 °C (+14 °F to +122 °F)
-----------------------	--------------------------------------

- Supports signal output through 4 HDMI 2.0 ports.
- Supports decoding videos in H.265, H.264, MJPEG, MPEG4, SVAC and MPEG2 formats.
- Decodes videos in 32 MP, 16 MP, 12 MP, 8 MP, 5 MP, 3 MP, UXGA, 1080p, 720p, D1, HD1, 2CIF, CIF and QCIF. Only H.265 can be used to decode videos in 32 MP, 16 MP, and 12 MP.
- Supports performing real-time decoding of network videos based on the following capabilities: 2-ch 32MP@25 fps, 4-ch 8MP@60 fps, 8-ch 8MP@30 fps, and 36-ch 1080p@30 fps. Only H.265 can be used to decode videos in 32 MP.
- Splits to 1, 4, 6, 8, 9, 16, 25, and 36 windows, and supports M × N custom split.
- Outputs to the following resolutions through the HDMI port: 4096 × 2160@60 Hz, 3840 × 2160@60 Hz, 4096 × 2160@24 Hz, 3840 × 2160@30 Hz, 2080 × 1560 @60 Hz, 2048 × 1152@60 Hz, 1920 × 1200@60 Hz, 1920 × 1080@60 Hz, 1280 × 1024@60 Hz, 1280 × 720@60 Hz, and 1024 × 768 @60 Hz.
- Supports custom resolution output, but the width and height must not exceed the highest default resolution of the system.
- Connects to small-pitch LEDs.
- Supports splicing together multiple screens.

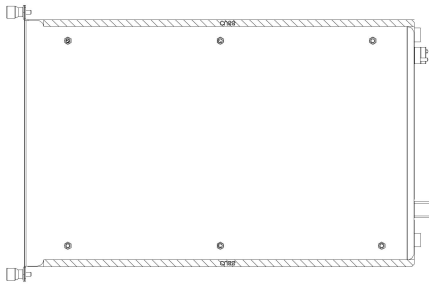
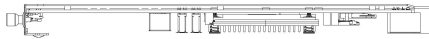
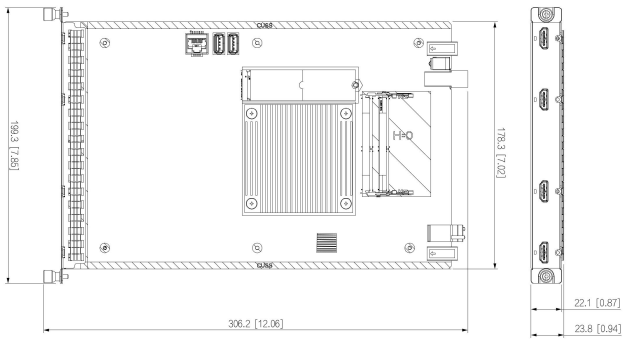
Operating Humidity	10%–90% (RH), non-condensing
Storage Temperature	-10 °C to +50 °C (+14 °F to +122 °F)
Storage Humidity	10%–90% (RH), non-condensing
Product Dimensions	23.8 mm × 199.3 mm × 306.2 mm (0.94" × 7.85" × 12.06") (H × W × D)
Packaging Dimensions	380 mm × 260 mm × 89 mm (14.96" × 10.24" × 3.50") (L × W × H)
Gross Weight	1.2 kg (2.65 lb)
Net Weight	0.9 kg (1.98 lb)

Ordering Information

Type	Model	Description
VMP DECODING CARD	DHI-VDC0405EH-M80	VIDEO MATRIX PLATFORM DECODING CARD

DHI-VDC0405EH-M80

Dimensions (mm[inch])



[mm] mm